



CISA

CYBERSECURITY &
INFRASTRUCTURE
SECURITY AGENCY

Cybersecurity and Infrastructure Security Agency (CISA)

VISION

Secure and resilient infrastructure for the American people.

MISSION

Lead the national effort to understand, manage, and reduce risk to the nation's cyber and physical infrastructure.



CISA's Core Capabilities

AT A GLANCE



PARTNERSHIP DEVELOPMENT



INFORMATION AND DATA SHARING



CAPACITY BUILDING



INCIDENT MANAGEMENT & RESPONSE



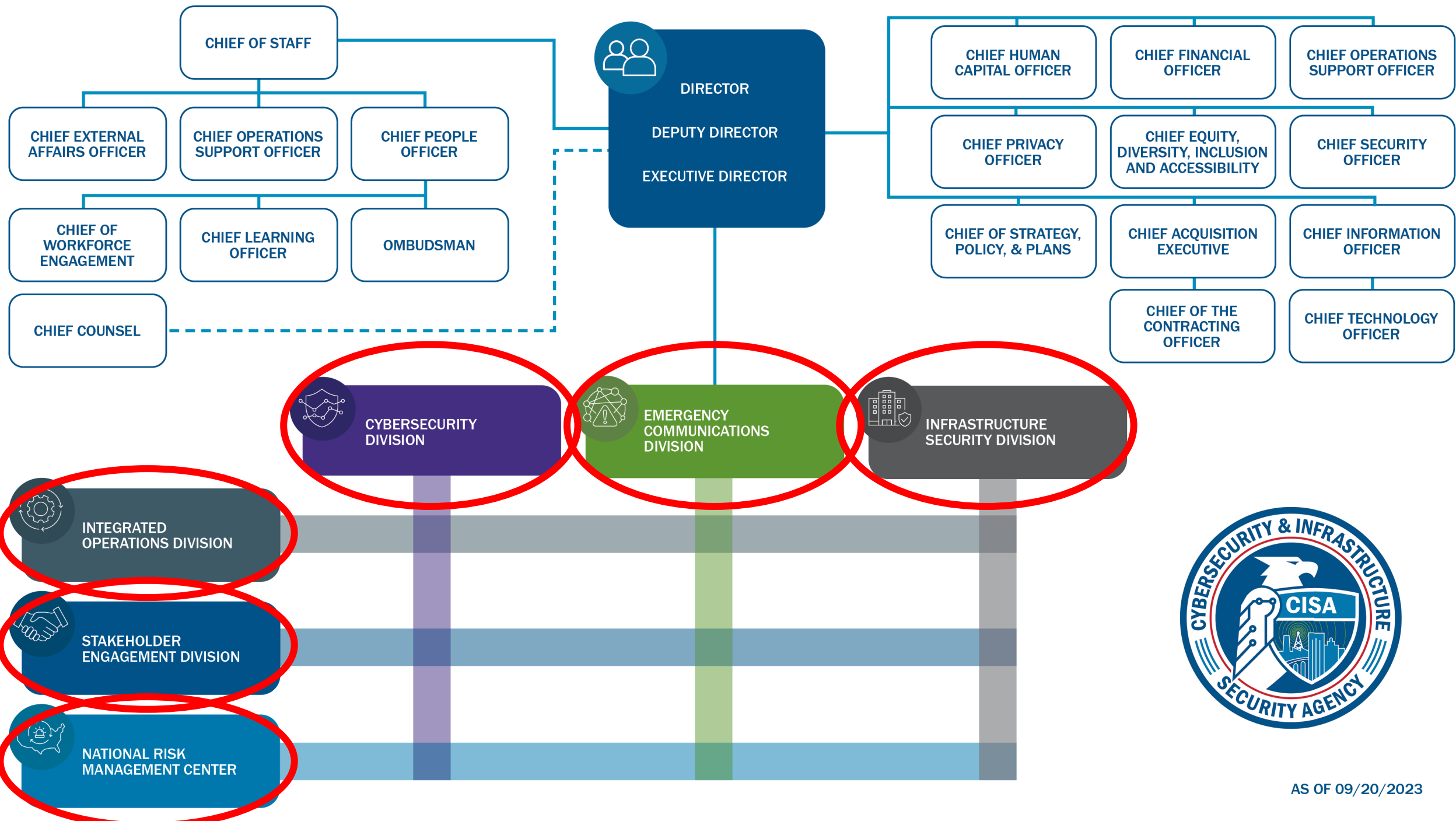
RISK ASSESSMENT AND ANALYSIS



NETWORK DEFENSE

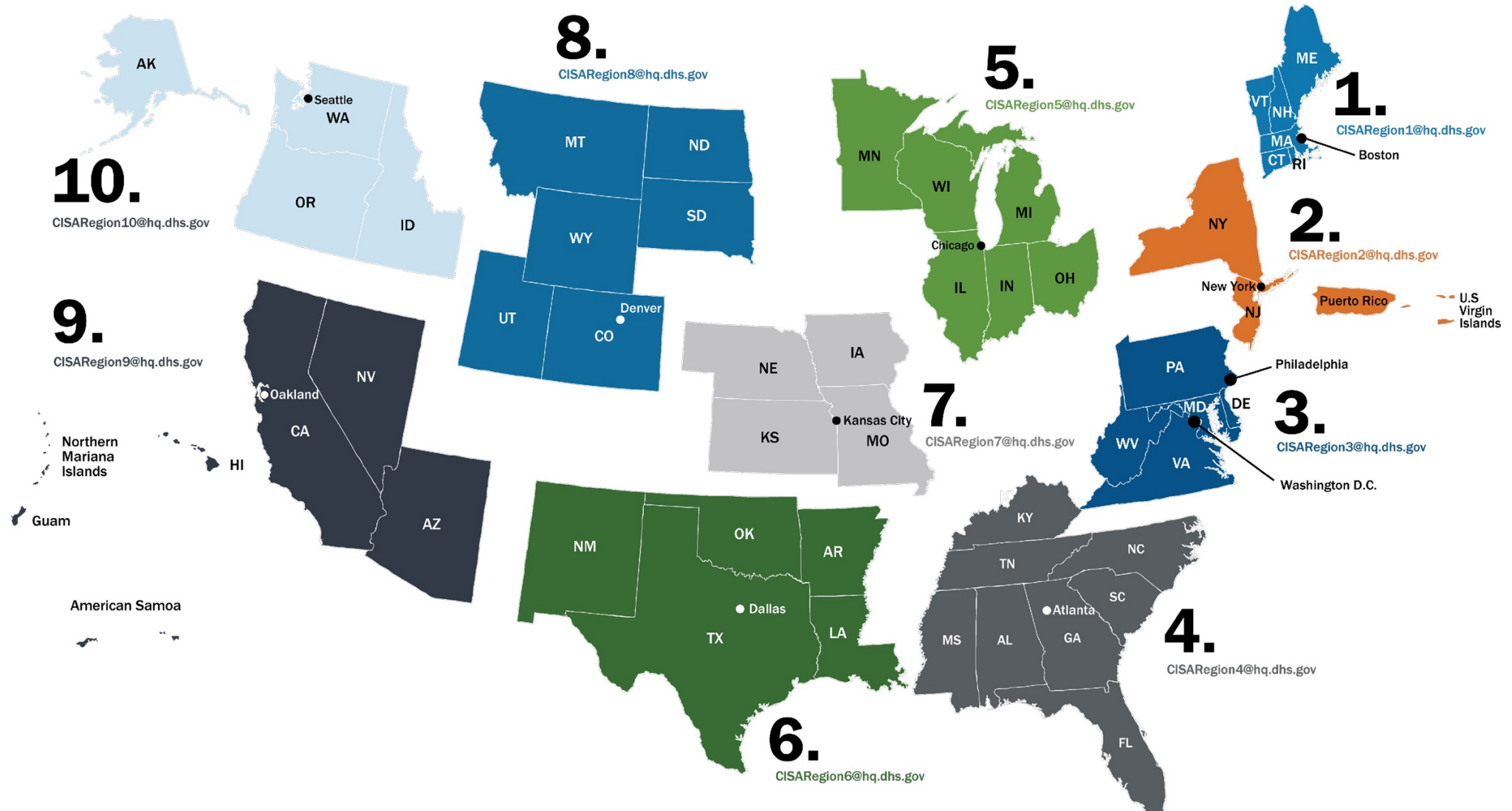


EMERGENCY COMMUNICATIONS



CISA Regions

1. Boston, MA
2. New York, NY
3. Philadelphia, PA
4. Atlanta, GA
5. Chicago, IL
6. Dallas, TX
7. Kansas City, MO
8. Denver, CO
9. Oakland, CA
10. Seattle, WA



16 Critical Infrastructure Sectors & Corresponding Sector Risk Management Agencies

 CHEMICAL CISA	 FINANCIAL Treasury
 COMMERCIAL FACILITIES CISA	 FOOD & AGRICULTURE USDA & HHS
 COMMUNICATIONS CISA	 GOVERNMENT FACILITIES DHS & GSA
 CRITICAL MANUFACTURING CISA	 HEALTHCARE & PUBLIC HEALTH HHS
 DAMS CISA	 INFORMATION TECHNOLOGY CISA
 DEFENSE INDUSTRIAL BASE DOD	 NUCLEAR REACTORS, MATERIALS AND WASTE CISA
 EMERGENCY SERVICES CISA	 TRANSPORTATIONS SYSTEMS TSA & USCG
 ENERGY DOE	 WATER EPA



(U) NATIONAL CRITICAL INFRASTRUCTURE PRIORITIZATION PROGRAM



(U) PROGRAM OVERVIEW

(U) In accordance with the Implementing Recommendations of the 9/11 Commission Act [Public Law 110-53 (Aug. 3, 2007)], the Secretary of the Department of Homeland Security (DHS) maintains a single classified prioritized list of systems and assets that “...would, if destroyed or disrupted, cause national or regional catastrophic effects.”¹ The Cybersecurity and Infrastructure Security Agency’s (CISA) National Risk Management Center (NRMC) executes the requirement through the National Critical Infrastructure Prioritization Program (NCIPP), which identifies qualifying domestic (Level 1 and Level 2) infrastructure.

(U) To strengthen the security and resilience of the nation’s critical infrastructure, NRMC manages physical and cyber risks through collaborative and integrated efforts with the critical infrastructure community. NRMC relies on state, local, tribal, and territorial (SLTT) partners, as well as Sector Risk Management Agencies (SRMAs) to communicate with critical infrastructure owners and nominate those assets, systems, and networks that would cause national or regional catastrophic effects.

(U) NCIPP NOMINATION CRITERIA

(U) The existence of the NCIPP critical infrastructure list is UNCLASSIFIED. The NRMC nomination criteria guidelines are UNCLASSIFIED//FOR OFFICIAL USE ONLY as defined by the *NPPD Security Classification Guidance*.² Figure 1



REGIONAL RESILIENCY ASSESSMENT PROGRAM



OVERVIEW

The Regional Resiliency Assessment Program (RRAP) is a voluntary, cooperative assessment of specific critical infrastructure that identifies a range of security and resilience issues that could have regionally or nationally significant consequences.

PROGRAM DESCRIPTION

The goal of the RRAP is to generate greater understanding and action among public and private sector partners to improve the resilience of a region's critical infrastructure. To accomplish this, the RRAP:

- Resolves infrastructure security and resilience knowledge gaps
- Informs risk management decisions
- Identifies opportunities and strategies to enhance infrastructure resilience
- Improves critical partnerships among the public and private sectors



REGIONAL RESILIENCY ASSESSMENT PROGRAM



Scoping

- Goals and objectives
- Research questions
- Stakeholders
- Data needs
- Products
- Implementation activities

Data Collection

- Outreach meetings
- Facilitated discussions
- SME interviews
- Site/system assessments
- Observing exercises

Analysis

- Infrastructure system modeling
- Geospatial
- Economic
- Supply chain
- Hazard analysis
- Literature review
- Data synthesis

Product Development

- Summary report
- Interactive mapping products
- Dependency visualizations
- Infrastructure data sheets
- Technical reports



REGIONAL RESILIENCY ASSESSMENT PROGRAM



100
RRAP
PROJECTS



550
INFRASTRUCTURE
ASSET ASSESSMENTS



51
CYBER
ASSESSMENTS



1,700+
PARTNERS



For more information, visit **CISA.gov** or contact **central@cisa.dhs.gov**